

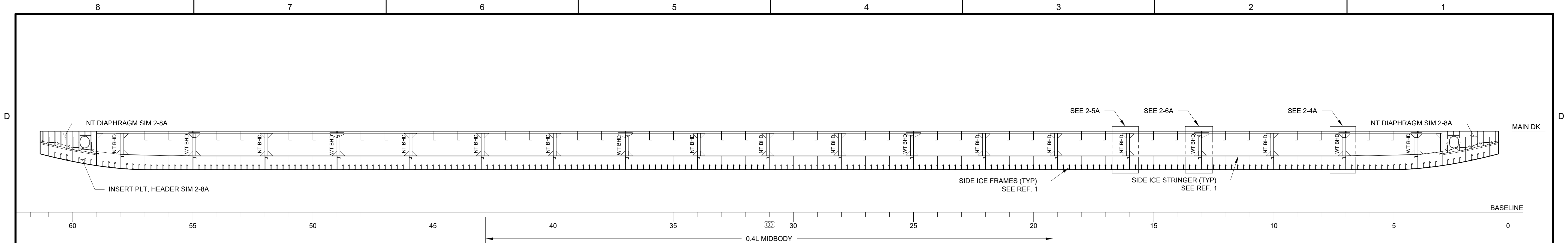
- GENERAL NOTES**
1. THE INTENT OF THIS DRAWING IS TO SHOW THE LONGITUDINAL STRUCTURE ARRANGEMENT OF THE BARGE PIER FOR MCMURDO STATION.
 2. THE BARGE IS TO BE UNINSPECTED.
 3. THE BARGE WILL BE CLASSED FOR ABS NOTATIONS *A1, DECK CARGO BARGE AND A -29°C DESIGN AIR TEMPERATURE.
 4. ICE BELT STRUCTURE IS DESIGNED TO ICE CLASS PC4 REQUIREMENTS FOR MOORING AT WINTER QUARTERS BAY. STRUCTURE IN THE HEAD LOG THROUGH THE FORWARD TOPSIDES RADIUS IS DESIGNED TO ICE CLASS PC6 REQUIREMENTS FOR TRANSIT TO WINTER QUARTERS BAY. SEE BASIS OF DESIGN (REF. 6).
 5. TYPICAL WEB FRAME AND DECK TRANSVERSE FRAME SPACING IS 64" UNO. TYPICAL SHELL FRAME, DECK BEAM, AND BULKHEAD STIFFENER SPACING IS 16" UNO.
 6. ALL SHELL AND DECK PLATING IS TO BE ABS GRADE EH UNO.
 7. ALL INTERNAL STRUCTURE IS TO BE ABS GRADE AH UNO.
 8. ALL LONGITUDINAL STRUCTURE SHALL BE CONTINUOUS THROUGH THE REGION 0.4L AMIDSHIPS.
 9. MATERIALS, FIT-UP AND WELDING SHALL BE TO THE SATISFACTION OF THE ATTENDING SURVEYOR AND OWNER'S REPRESENTATIVE.
 10. STRUCTURAL ALIGNMENT IS TO BE IN ACCORDANCE WITH REFERENCE 5.
 11. ALL WELDING, WELD SIZES, MATERIALS, AND PROCEDURES SHALL COMPLY WITH APPLICABLE ABS RULES.
 12. FOR ALL BUTT WELDED JOINTS OF PLATES WITH A THICKNESS DIFFERENCE EXCEEDING 1/8", THE THICKER PLATE SHALL BE TAPERED 3:1.
 13. WELDING SHALL BE DOUBLE CONTINUOUS IN ICE STRENGTHENED AREAS AND AREAS EXPOSED TO WEATHER.
 14. THE BUILDER SHALL NOT REDUCE SCANTLINGS.

REFERENCES	
1.	GLOSTEN, 887-B307-01, DECK AND BOTTOM STRUCTURE.
2.	GLOSTEN, 887-B307-02, SIDE PLATING.
3.	GLOSTEN, 887-B309-01, TRANSVERSE STRUCTURE.
4.	GLOSTEN, 887-B105-01, LINES PLAN.
5.	IACS, SHIPBUILDING AND QUALITY REPAIR STANDARD, REC. NO 47, REV. 10, 2021.
6.	GLOSTEN, 887-B003-01, BASIS OF DESIGN.

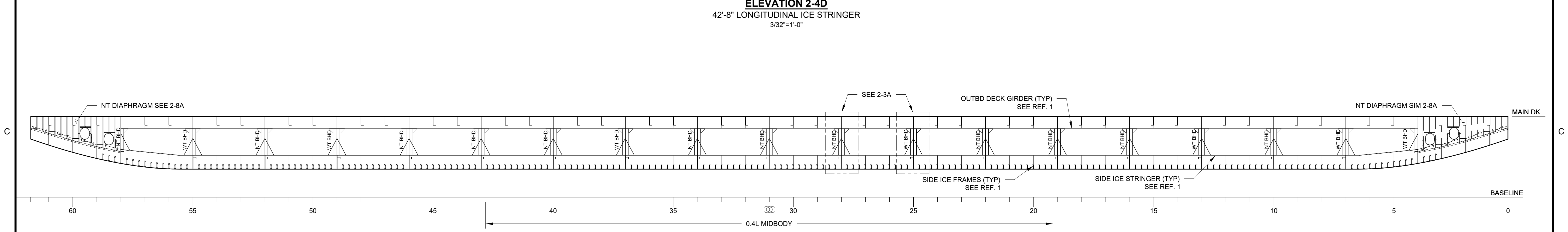
REVISIONS				
ZONE	REV	DESCRIPTION	DATE	APPD



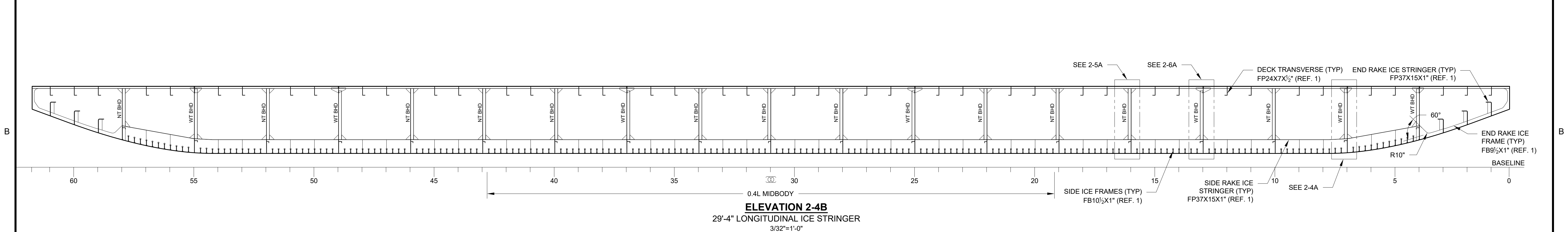
NSF MCMURDO OFFSHORE INFRASTRUCTURE FLOATING BARGE PIER 328' X 100' X 18' LONGITUDINAL STRUCTURE			
		More than DESIGN.	
1201 WESTERN AVENUE, SUITE 200 SEATTLE, WASHINGTON 98101 T +1 206.624.7850 GLOSTEN.COM		MDC Project Number 3438	
Drawn by CJH	Checked by ALG	Approved by BGL	Date 2023/06/09
Glosten File Number 22105.01	Scale AS NOTED	Drawing Number 887-B311-01	Sheet of 1 2
Revision -		Date 2023/06/09	



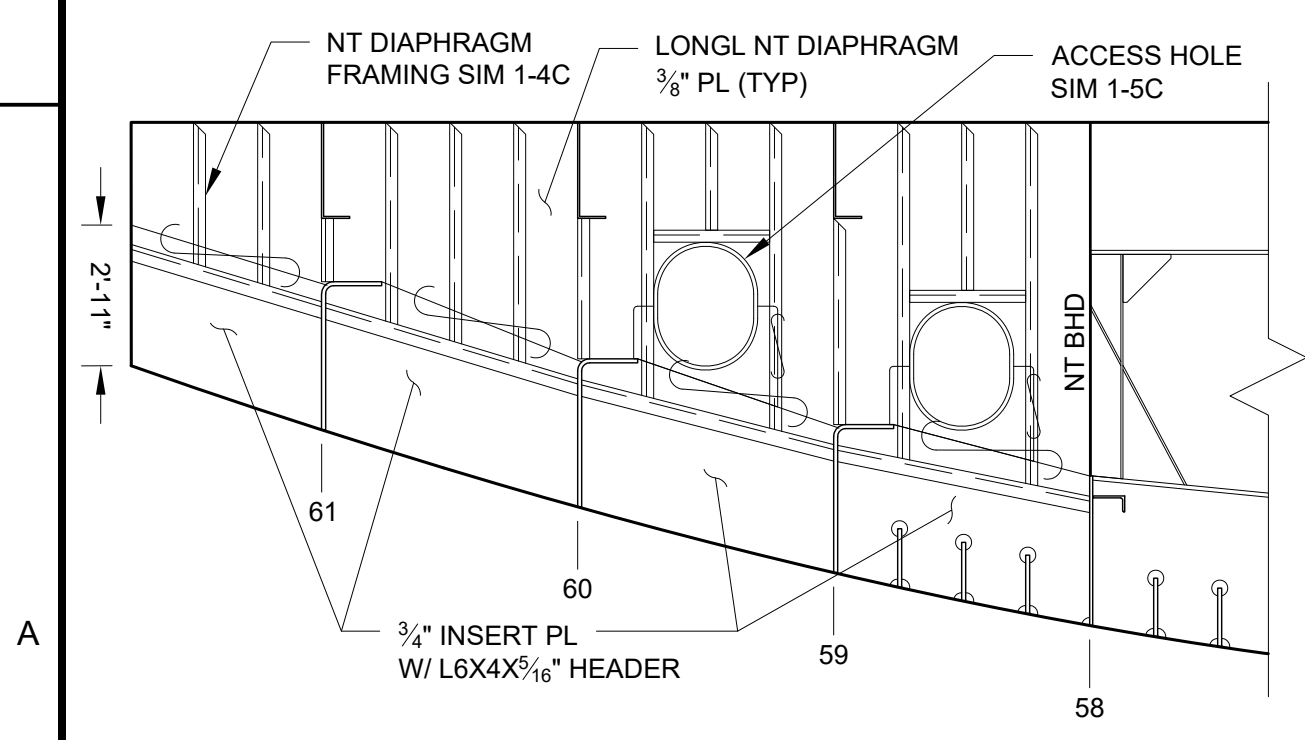
ELEVATION 2-4D
42'-8" LONGITUDINAL ICE STRINGER
3/32"=1'-0"



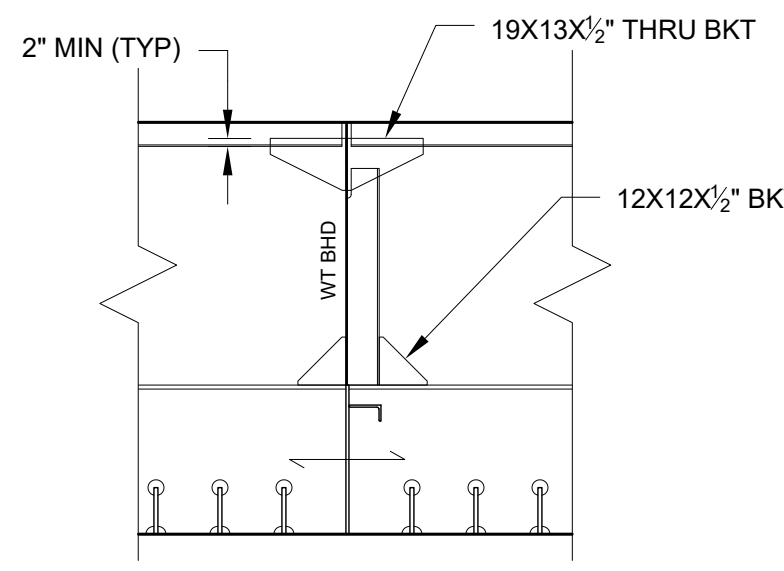
ELEVATION 2-4C
36'-0" LONGITUDINAL ICE STRINGER
3/32"=1'-0"



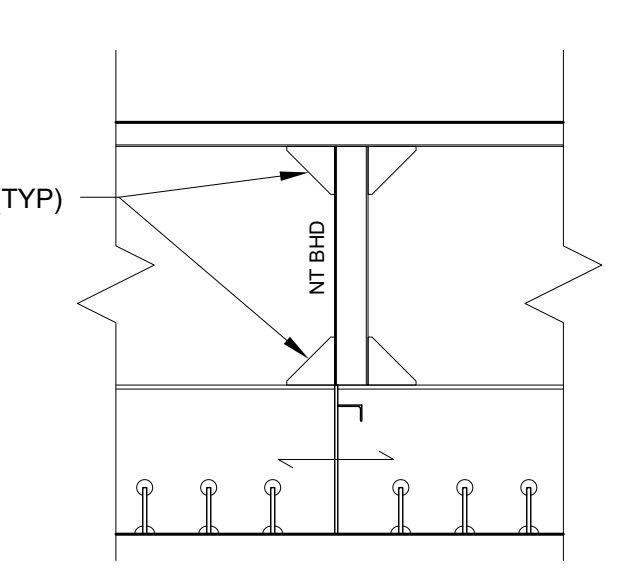
ELEVATION 2-4B
29'-4" LONGITUDINAL ICE STRINGER
3/32"=1'-0"



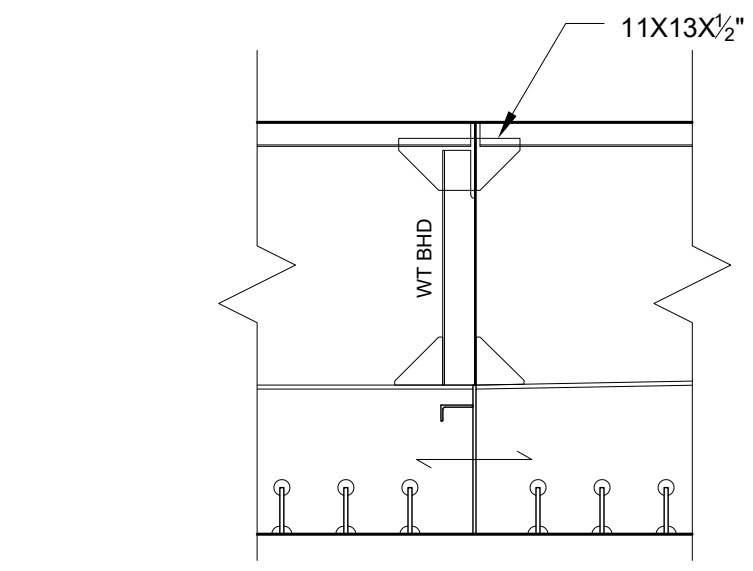
ELEVATION 2-8A
36'-0" LONGITUDINAL ICE STRINGER
END RAKE DETAIL
STERN SHOWN, BOW SIM & OPP
1/4"=1'-0"



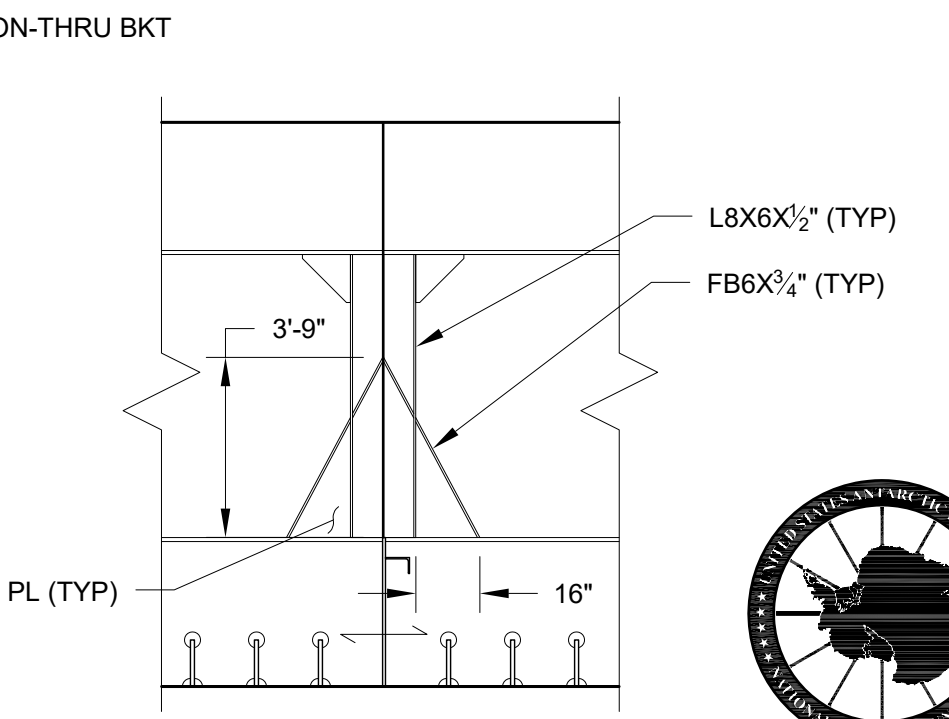
ELEVATION 2-6A
TYP WT BHD CONNECTION DETAIL
AT 42'-8" ICE STRINGER
29'-4" ICE STRINGER SIM
1/4"=1'-0"



ELEVATION 2-5A
TYP NT BHD CONNECTION DETAIL
AT 42'-8" ICE STRINGER
29'-4" ICE STRINGER SIM
1/4"=1'-0"



ELEVATION 2-4A
FR7 WT BHD CONNECTION DETAIL
AT 42'-8" ICE STRINGER
29'-4" ICE STRINGER SIM, FR4 SIM
1/4"=1'-0"



ELEVATION 2-3A
WT AND NT BHD CONNECTION
DETAIL AT 36'-0" ICE STRINGER
1/4"=1'-0"



				USACE MARINE DESIGN CENTER PHILADELPHIA, PENNSYLVANIA	
NSF MCMURDO OFFSHORE INFRASTRUCTURE FLOATING BARGE PIER 328' X 100' X 18' LONGITUDINAL STRUCTURE					
		More than DESIGN.		1201 WESTERN AVENUE, SUITE 200 SEATTLE, WASHINGTON 98101 T +1 206.624.7850 GLOSTEN.COM	
MDC Project Number	Drawn by	Checked by	Approved by	Size	Date
3438	CJH	ALG	BGL	D	2023/06/09
Glosten File Number	Scale	Drawing Number	Sheet	of	Revision
22105.01	AS NOTED	887-B311-01	2	2	-