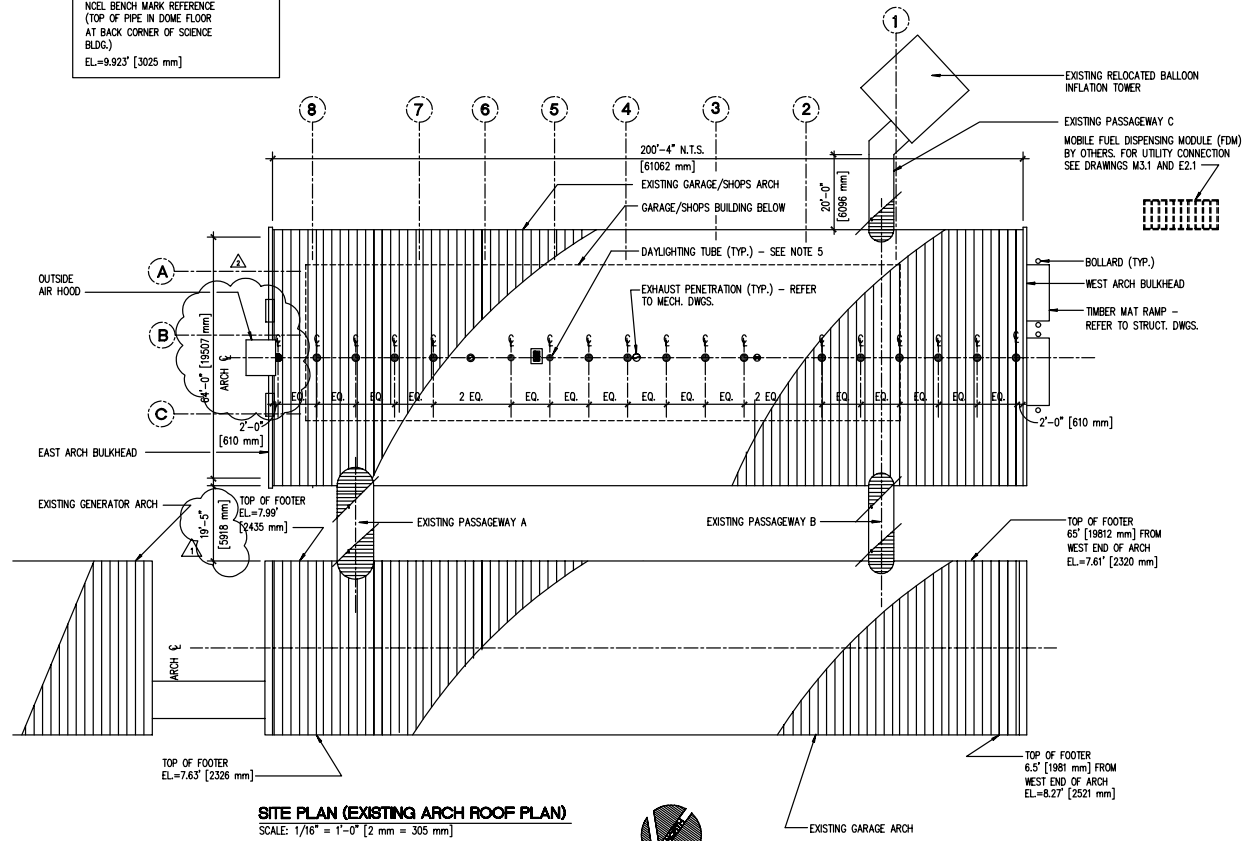


ABBREVIATIONS:

A.B.	ANCHOR BOLT	OPNG.	OPENING
ADJ.	ADJUSTABLE	OPP.	OPPOSITE
ADJA.	ADJACENT	O.S.B.	ORIENTED STRAND BOARD
A.F.F.	ABOVE FINISH FLOOR	P.C.	PIECE
ALT.	ALTERNATE	P.L.	PLATE
APPROX.	APPROXIMATE	P.L.B.G.	PLUMBING
A.S.A.	ANTARCTIC SUPPORT ASSOCIATES	PLYWD.	PLYWOOD
BD.	BOARD	PNL.	PANEL
BLDG.	BUILDING	P.O.L.	PETROLIUM OIL LUBRICANTS
BLK.	BLOCK	P.T.	POINT
BLKG.	BLOCKING	RAD.	RADIUS
BM.	BEAM	REF.	REFERENCE
BOT.	BOTTOM	REF.	REFERENCE
BRKT.	BRACKET	REIN.	REINFORCING
C.I.	CAST IRON	REQ.	REQUIRED
CLG.	CEILING	RESIL.	RESILIENT
CLKG.	CALLING	RGTR.	REGISTER
CLR.	CLEAR	RM.	ROOM
C.O.	CLEAN OUT	R.O.	ROUGH OPENING
COL.	COLUMN	SCBA	SELF-CONTAINED BREATHING APPARATUS
COLR.	COLOR	SCHED.	SCHEDULE
COND.	CONDITION	SECT.	SECTION
CONN.	CONNECTION	SHT.	SHEET
CONSTR.	CONSTRUCTION	SIM.	SIMILAR
CONT.	CONTINUOUS	SL.	SLOPE
CTR.	CENTER	SLDG.	SLIDING
D.	DEEP OR DEPTH	SPEC.	SPECIFICATION
DBL.	DOUBLE	SQ.	SQUARE
DEMO.	DEMOLISH	ST.	STEEL
DET.	DETAIL	S.S.	STAINLESS STEEL
DIA.	DIAMETER	STD.	STANDARD
DIM.	DIMENSION	STL.	STEEL
DN.	DOWN	STOR.	STORAGE
DWG.	DRAWING	STRL.	STRUCTURAL
E.A.	EACH	TBM.	TOP OF BENCH MARK
E.J.	EXPANSION JOINT	TEMP.	TEMPERED
EL.	ELEVATION	THK.	THICK
ELEC.	ELECTRICAL	TYP.	TYPICAL
EMER.	EMERGENCY	UNF.	UNFINISHED
E.P.B.	ELEC. PANEL BOARD	U.O.N.	UNLESS OTHERWISE NOTED
E.P.S.	EXPANDED POLYSTYRENE	VERT.	VERTICAL
EQ.	EQUAL	V.I.F.	VERIFY IN FIELD
EQPT.	EQUIPMENT	W/	WITH
EXP.	EXPANSION	WD.	WOOD
EXPD.	EXPANDED	W.H.	WATER HEATER
EXTG(E)	EXISTING	W/O	WITH OUT
EXT.	EXTERIOR	WP.	WATERPROOFING
F.A.	FIRE ALARM	WR.	WATER RESISTANT
F.B.	FLAT BAR	WSCT.	WEIGHT
F.D.	FLOOR DRAIN	WT.	
FDN.	FOUNDATION		
F.E.	FIRE EXTINGUISHER		
FIN.	FINISH		
FL.	FLOOR		
F.O.F.	FACE OF FINISH		
F.PRF.	FIREPROOF		
FR.	FRAME		
F.R.P.	FIBERGLASS REINFORCED		
FT.	FOOT OR FEET		
FTG.	FOOTING		
FUT.	FUTURE		
GA.	GAUGE		
GALV.	GALVANIZED		
G.I.	GALVANIZED IRON		
GL.	GLASS		
GR.	GRADE		
GYP.	GYP-SUM		
H.	HIGH		
HWR.	HARDWARE		
H.M.	HOLLOW METAL		
HORIZ.	HORIZONTAL		
HGT.	HEIGHT		
I.D.	INSIDE DIAMETER		
INCL.	INCLUSIVE, INCLUDED OR INCLUDING		
INT.	INTERIOR		
INSUL.	INSULATION		
JST.	JOIST		
JT.	JOINT		
MAX.	MAXIMUM		
MECH.	MECHANICAL		
MEMB.	MEMBRANE		
MET.	METAL		
MFR.	MANUFACTURER		
MIN.	MINIMUM		
MISC.	MISCELLANEOUS		
MTD.	MOUNTED		
N.I.C.	NOT IN CONTRACT		
NO.	NUMBER		
NOM.	NOMINAL		
N.S.F.	NATIONAL SCIENCE FOUNDATION		
N.T.S.	NOT TO SCALE		
OA.	ON CENTER		
O.C.	ON CENTER		
O.D.	OUTSIDE DIAMETER		
O.F.C.I.	OWNER FURNISHED CONTRACTOR INSTALLED		

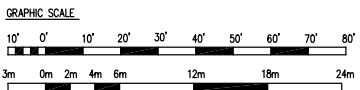
REVISIONS				
LTR	DESCRIPTION	PREP BY	DATE	APPROVED
△	REVISED PER 06 CR 011	R.E.M.	10/3/00	
△	REVISED PER 06 CR 026	P.S.J.	9/4/02	

BENCHMARK NOTE
 NCEL BENCH MARK REFERENCE
 (TOP OF PIPE IN DOME FLOOR
 AT BACK CORNER OF SCIENCE
 BLDG.)
 EL.=9.923' [3025 mm]



SITE PLAN (EXISTING ARCH ROOF PLAN)
 SCALE: 1/16" = 1'-0" [2 mm = 305 mm]

- NOTES:**
1. ARCH ROOF PENETRATION DETAILS TO BE PROVIDED BY ASA
 2. ALL ARCH PENETRATIONS ARE SHOWN AND DIMENSIONED AS A GENERAL GUIDELINE ONLY - ALL ARCH PENETRATIONS MUST BE LOCATED WITHIN THE ARCH MANUFACTURER'S RECOMMENDED RIBBED ZONE.
 3. NORTH = GRID NORTH + 0° LONGITUDE
 4. ALL EXISTING CONDITION DIMENSIONS PROVIDED BY NSF.
 5. PROVIDE DAYLIGHTING TUBE PENETRATIONS SIMILAR TO "SOLATUBE". SEAL, FLASH, AND COUNTERFLASH. PROVIDE INSTALLATION PER MANUFACTURER'S INSTRUCTIONS.



A1.0

The Contractor will be responsible for coordinating the work among the various trades as necessary to avoid conflicts and to insure the installation of all work within the available space.		<h1>AS BUILT</h1>		IF SHEET IS LESS THAN 24" X 36" IT IS A REDUCED PRINT - SCALE REDUCED ACCORDINGLY
PACIFIC DIVISION 707 RICHARDS STREET, SUITE 600 HONOLULU, HI 96813		DEPARTMENT OF THE NAVY PACIFIC DIVISION MAKALAPA, HAWAII		NAVAL FACILITIES ENGINEERING COMMAND AMUNDSEN-SCOTT SOUTH POLE STATION ANTARCTICA
<h2>GARAGE/SHOPS BUILDING</h2> <h3>SITE PLAN AND ABBREVIATIONS</h3>				
DESIGNED BY: LD, FM, SW, TK, OR, LD DRAWN BY: [] ON [] DATE: 12/29/02 SUBMITTED BY: [] DATE: [] PERM NUMBER (IF APPLICABLE): [] PADDY NEED (IF APPLICABLE): [] DEPT: [] POC: [] EMP: [] APPROVED: [] DATE: []	SIZE: D CODE BENT NO: 80091 NAVFAC DRAWING NO: 7820502 CONSTR CONTR NO: []	SCALE: 1/16" = 1'-0" SPEC: SPFF-06 SHEET 2 OF 64	FILE: SPFF-06-24	
FINAL SUBMITTAL				